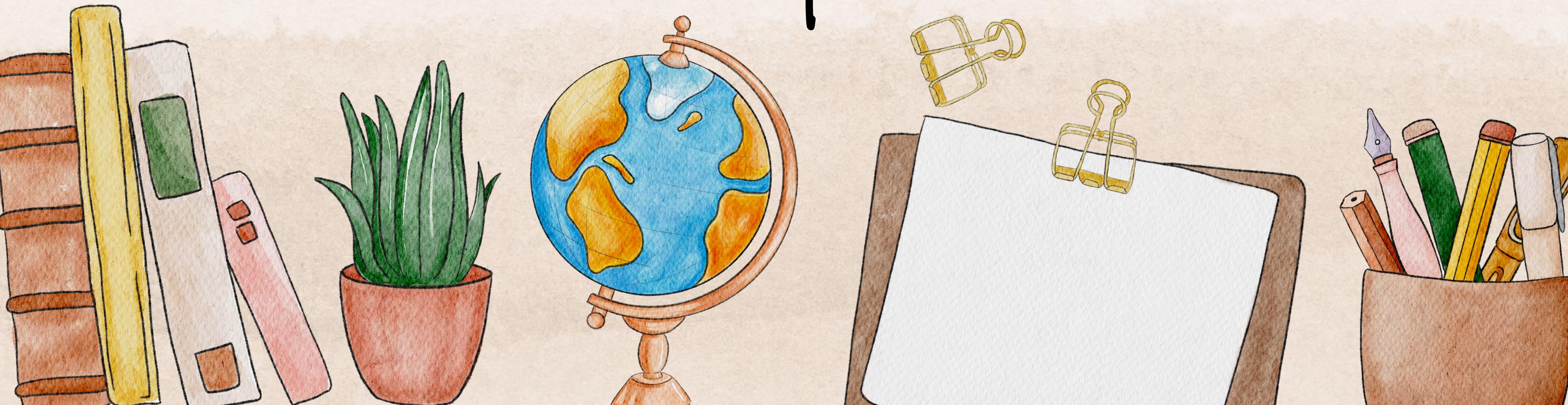


Meet the Teachers

Thursday 11th September

3.15pm



Meet the Teachers

Mrs Stanford (Monday-Wednesday)

Miss Collins (Thursday-Friday)



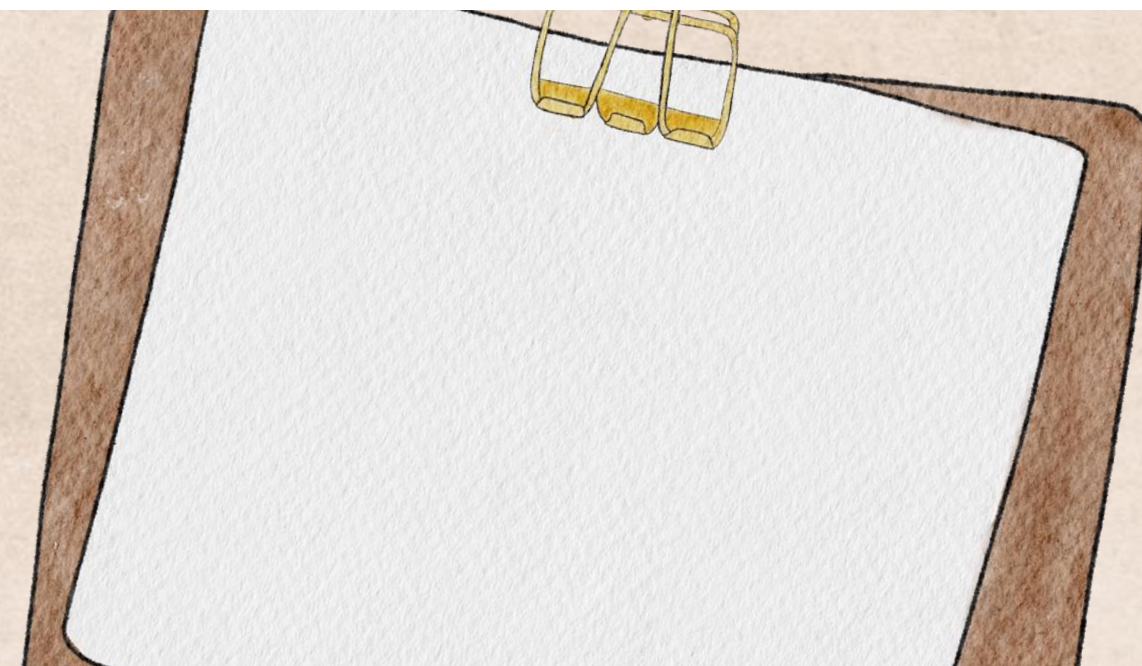


**Join your child's adventure
on ClassDojo!**



Scan to join Fox Class 24-25

Class Dojo



Uniform

Daily School Uniform:

Pale blue polo shirt (one with school logo for events)

Navy sweatshirt/cardigan or hooded sweatshirt with school logo

Navy blue trousers, skirt or pinafore dress (NOT jeans or joggers)

Navy or black sensible flat shoes (NO sports shoes or high heels)

White, grey or navy socks or tights

Girls may wear blue check or stripe summer dresses in hot

weather

White, grey or navy socks

PE

PE will be on Tuesdays and Fridays

PE Kit should be worn to school

Navy shorts or navy jogging bottoms

Pale blue T-shirt with school logo Daps/plimsolls or
trainers

White, grey or navy socks

Homework

Doodle maths will be set regularly and "added extras" should be completed every week.

Reading records should be completed 5 x per week.

Spelling sheets from class will be sent home for consolidation (these do not need to be brought back in).

Special projects will be set, for example over a half term.

SATS revision will be sent home after Easter for Year 6.

Spelling

We have introduced our new spelling and phonics scheme this year, Unlocking Letters and Sounds.

- Spelling will now be taught five times a week, just like phonics. This will allow for a consistent and structured approach with daily reinforcement.
- There will be no weekly spelling tests or word lists sent home. Spelling will instead be assessed throughout the lessons.
- Two optional consolidation worksheets will be uploaded to Class Dojo each week. These are the same activities the children will complete in school, but they are available for families who would like to support learning at home and stay informed about the spelling rules being covered.

School Residential

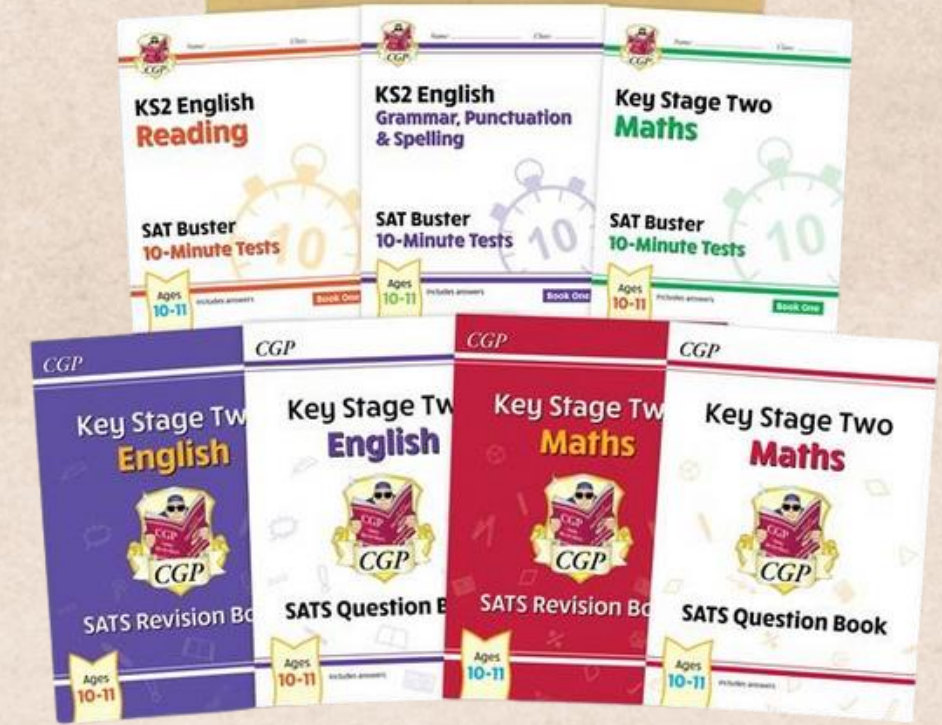
We are very excited to be going on school camp from 15th-19th June 2026.
More information will follow and we will hold an information evening nearer the
time.



Year 6 SATS

Year 6 SATS will take place Monday 11th May -
Thursday 14th May.

- Monday 11th May: Grammar & Punctuation test (45 minutes) and Spelling Test (20 minutes).
- Tuesday 12th May: English Reading Test (60 minutes).
- Wednesday 13th May: Mathematics Arithmetic (Paper 1, 30 minutes) and Mathematics Reasoning (Paper 2, 40 minutes).
- Thursday 14th May: Mathematics Reasoning (Paper 3, 40 minutes).



Excitement for the New Year

We couldn't be more excited about the new school year!

Our topics throughout the year include:

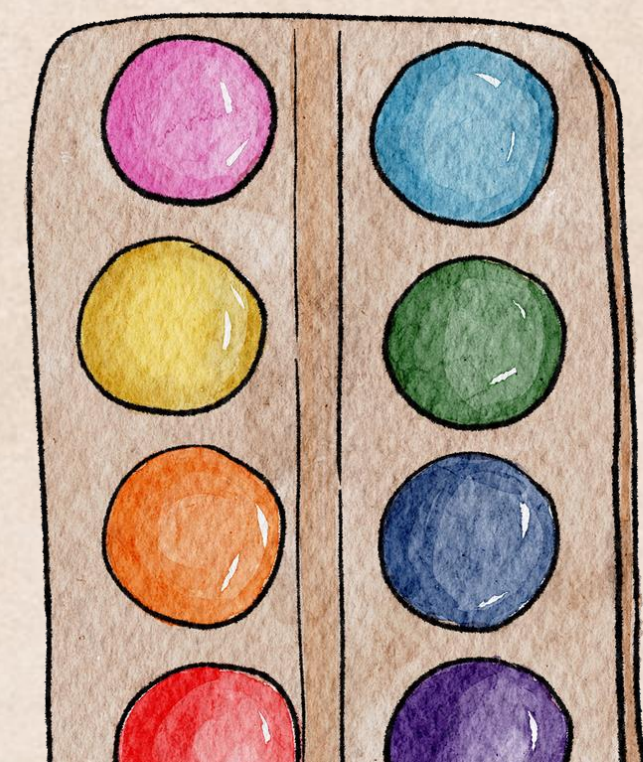
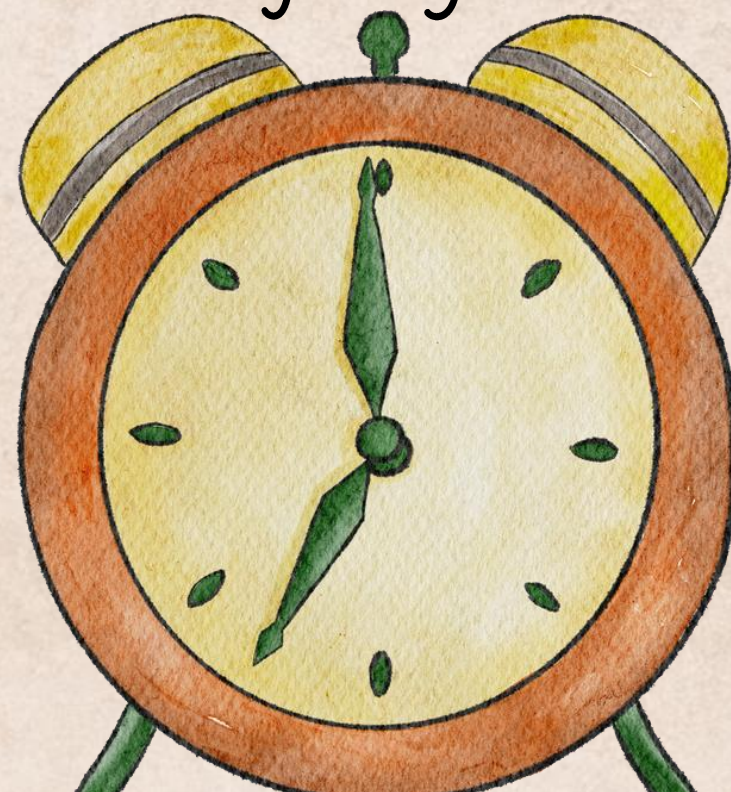
WW2 in History

Evolution, Light and Forces in Science

Energy and Sustainability, Slums and Biomes in Geography

Printing and Architecture and Perspectives in Art

Moving Toys and Textiles in D&T



Thank You!

